

MHL350E HD

Well equipped for tough outdoor use:
 The MHL350E HD can go anywhere and
 also reliably travels across forest terrain.



The all-rounder for timber handling – lifts and pulls with power and speed.

The MHL350 E HD succeeds the established MHL460 model. The new version is even more versatile and has been optimised for trailer towing. In addition to accomplishing ordinary loading tasks, the MHL350E HD also performs excellently as a tractor.

Grab, load, go – the MHL350E HD is power unit and towing vehicle in one

While a conventional unit operates only when on supports, the **MHL350E HD** is distinguished by its enlarged undercarriage, which is designed for rapid yet comfortable handling of heavy loads over distances. This is made possible through the employment of axles

with diff lock and single, large diameter pneumatic tyres – of different designs to suit specific environments. The design of the drive unit with its reversing lock is also advantageous. With a trailer linked to its Rockinger trailer coupling, the MHL350E HD transports loads safely and over long distances with speeds of up to 20 km/h.

Live Heel loading gear – perfect grip on long timbers

The Live Heel equipment of the MHL350E HD was developed specifically for timber; it handles trunks up to 12 m long with ease.

Excellent overview thanks to cab with hydraulic lift

A clear view and good field of vision are key to safer working and a higher throughput. At six metres above ground the operator has a perfect overview.

WORKS FOR YOU.™

CLOSEUP

MHL350E HD



Cab with hydraulic lift and up to 16m grab projection.



Grab with Live Heel loading system in use.

Equipment and performance data at a glance

Service weight ► 38 tonnes

Transporting heavy loads ► The enlarged undercarriage with fitted trailer coupling and extremely wide-profile tyres allow heavy loads to be moved quickly and securely.

Elevating cab ► The cab with hydraulic lift can be raised to 6m above ground level, giving a perfect view onto the surrounding work area. This facilitates safe and rapid working.

Drive unit ► The drive unit is equipped with energy feedback and reversing block. This provides the machine operator with maximum driving comfort. In addition, this feature also protects hydraulic components, transmission and axles. In addition to the 148kW Deutz diesel engine in R6 layout as Tier 3, a 160kW engine is also available in Tier 4i configuration. Equipped with powershift transmission as standard.

Undercarriage ► The undercarriage is specially designed for trailer use, while also providing excellent stability when stationary.

Maximum projection ► 16m straight or cranked – with optional Live Heel loading system.

Axles ► The integral diff lock enables the machine to move easily through woodland and across very uneven ground. In such situations, the torque is transferred to the tyre that offers the most traction.

Pulling power and speed ► With an exceptional pulling power and speeds of up to 20km/h the MHL350E HD is both very powerful and extremely mobile.

Tyres ► Single pneumatic tyres with very large diameter are fitted as standard. Tyres are precisely matched to the customer's requirements: From tarmacked surfaces to soft forest paths. Machine operators benefit from additional safety and excellent comfort on the move.



The MHL350E HD moves immense amounts of timber in a very short time.



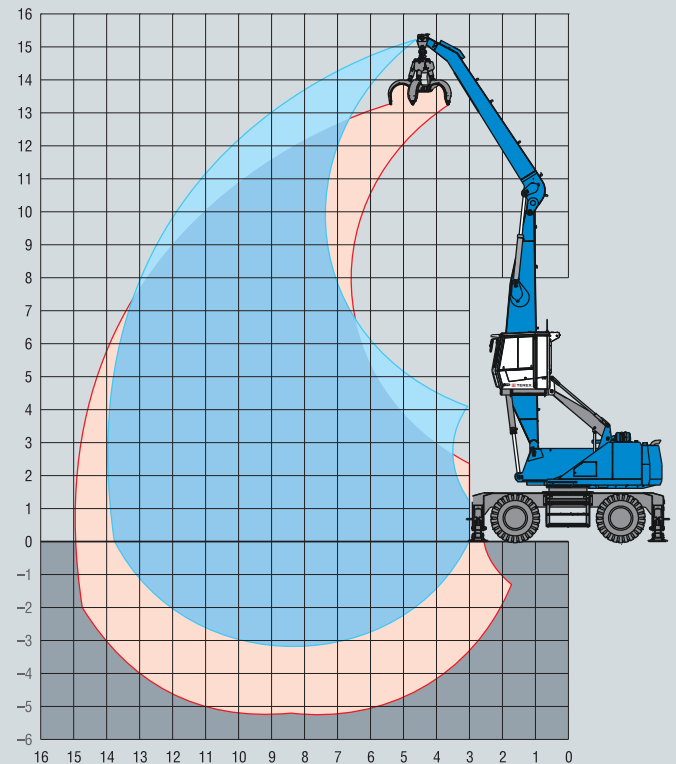
WORKS FOR YOU.™

APPLICATION AREAS AND LOAD CAPACITIES

Height and projection in metres [m]

Load values in tonnes [t]

The lift capacity values are stated in imperial tons (t). The pump pressure is 360 bar (5,220 psi). In accordance with ISO 10567 the lift capacity values represents 75% of the static tipping loads or 87% of the hydraulic lifting force (marked °). On solid and level ground the values apply to a swing range of 360°. The (...) values apply in the longitudinal direction of the undercarriage. The values for "not supported" only apply via the steering axle or the locked oscillating axle. The weights of the attached load hoisting equipment (grab, load hook, etc.) must be deducted from the lift capacity values. The working load of the lifting device must be observed. In accordance with the EN 474-5 for object handling application hose rupture valves on the boom and stick cylinders, an overload warning device and the lift capacity table in the cab are required. For object handling application the machine has to be supported on a level ground.

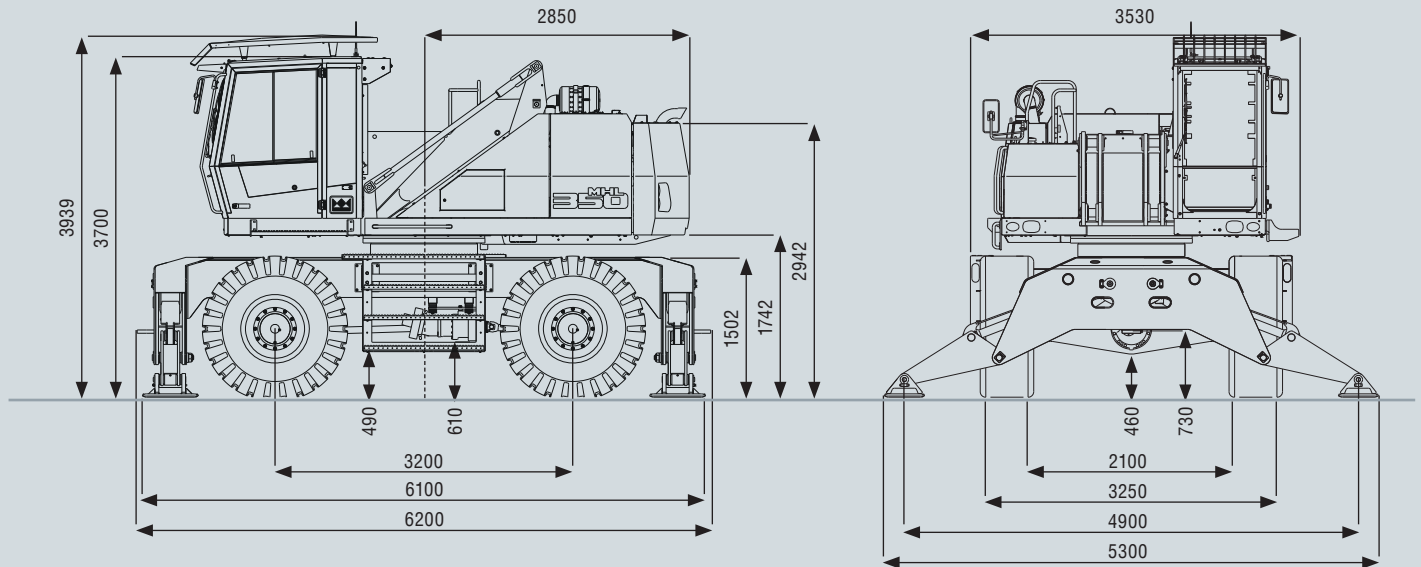


Height [m]	Undercarriage support	Projection [m]						
		4.5	6	7.5	9	10.5	12	13.5
13.5	unsupported			(4.6°)				
	4-point support			4.6° (4.6°)				
12	unsupported			(6.0°)	(4.7°)			
	4-point support			6.0° (6.0°)	4.7° (4.7°)			
10.5	unsupported			(6.8°)	(5.9°)	(4.4°)		
	4-point support			6.8° (6.8°)	5.9° (5.9°)	4.4° (4.4°)		
9	unsupported			7.5°	(6.2)	(4.8)	(3.5°)	
	4-point support			7.5° (7.5°)	6.8° (6.8°)	5.6° (5.6°)	3.5° (3.5°)	
7.5	unsupported			(8.0°)	(6.1)	(4.8)	(3.8)	
	4-point support			8.0° (8.0°)	7.1° (7.1°)	6.4° (6.4°)	4.8° (4.8°)	
6	unsupported		(9.5°)	(7.9)	(6.0)	(4.7)	(3.7)	(2.7°)
	4-point support		9.5° (9.5°)	8.5° (8.5°)	7.4° (7.4°)	6.5° (6.5°)	5.8° (5.8°)	2.7° (2.7°)
4.5	unsupported	(12.6°)	(10.7)	(7.6)	(5.7)	(4.5)	(3.7)	(3.0)
	4-point support	12.6° (12.6°)	11.3° (11.3°)	9.2° (9.2°)	7.7° (7.7°)	6.7° (6.7°)	5.9° (5.9°)	3.7° (3.7°)
3	unsupported	(15.4)	(9.9)	(7.2)	(5.5)	(4.4)	(3.6)	(3.0)
	4-point support	18.1° (18.1°)	12.7° (12.7°)	9.8° (9.8°)	8.1° (8.1°)	6.8° (6.8°)	5.9° (5.9°)	4.2° (4.2°)
1.5	unsupported	(8.0°)	(9.2)	(6.8)	(5.2)	(4.2)	(3.5)	(2.9)
	4-point support	8.0° (8.0°)	13.5° (13.5°)	10.3° (10.3°)	8.3° (8.3°)	6.9° (6.9°)	5.8° (5.8°)	4.3° (4.3°)
0	unsupported	(5.8°)	(8.8)	(6.5)	(5.1)	(4.1)	(3.4)	(2.9)
	4-point support	5.8° (5.8°)	13.4° (13.4°)	10.2° (10.2°)	8.2° (8.2°)	6.7° (6.7°)	5.5° (5.5°)	3.8° (3.8°)
-1.5	unsupported	(5.8°)	(8.6)	(6.3)	(4.9)	(4.0)	(3.4)	
	4-point support	5.8° (5.8°)	11.4° (11.4°)	9.7° (9.7°)	7.7° (7.7°)	6.2° (6.2°)	4.9° (4.9°)	
-3	unsupported			(6.3)	(4.9)			
	4-point support			8.4° (8.4°)	6.7° (6.7°)			

WORKS FOR YOU.™

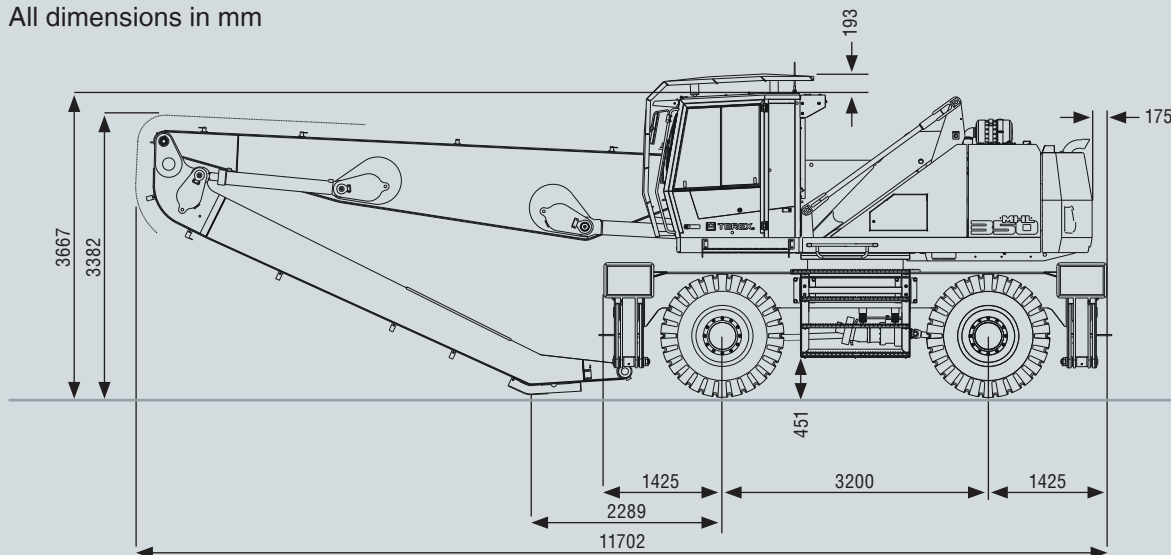
DIMENSIONS

All dimensions in mm



SHIPPING DIMENSIONS

All dimensions in mm



www.terex-fuchs.com

Effective starting: December 2013. Product specifications and prices are subject to change without notice or obligation. The photographs and/or drawings in this document are for illustrative purposes only. Refer to the appropriate Operator's Manual for instructions on the proper use of this equipment. Failure to follow the appropriate Operator's Manual when using our equipment or to otherwise act irresponsibly may result in serious injury or death. The only warranty applicable to our equipment is the standard written warranty applicable to the particular product and sale and Terex makes no other warranty, express or implied. Products and services listed may be trademarks, service marks or trade-names of Terex Corporation and/or its subsidiaries in the USA and other countries. All rights are reserved. Terex is a registered trademark of Terex Corporation in the USA and many other countries. © 2013 Terex Corporation.

